

## 1 Carbon footprint (GHG emissions)

### Definition and scope

Total amount of greenhouse gas (GHG) emissions, either directly and indirectly caused by the production and consumption activities of a country, or accumulated over the life cycle stages of a product (goods and services). All direct (on-site, internal) and indirect (off-site, external, embodied, upstream and downstream) emissions are taken into account. This indicator is directly related to Indicator 9.4.1, CO<sub>2</sub> emission per unit of value added, under SDG Target 9.4: By 2030, upgrade infrastructure and retrofit industries to make them sustainable, with increased resource-use efficiency and greater adoption of clean and environmentally sound technologies and industrial processes, with all countries taking action in accordance with their respective capabilities within the SDGs Global Indicator Framework.

### Factsheet rationale

It measures the impact on the environment (in terms of GHG emissions) of both industrial production and household consumption activities, namely, energy, agriculture, industrial processes, waste, land-use change and forestry. It is considered a macro indicator as it gives a general picture rather than indicating the direct impact on the environment of the countries' socio-economic model in the aspects mentioned above, among others.

### Current situation and progress in the Mediterranean region

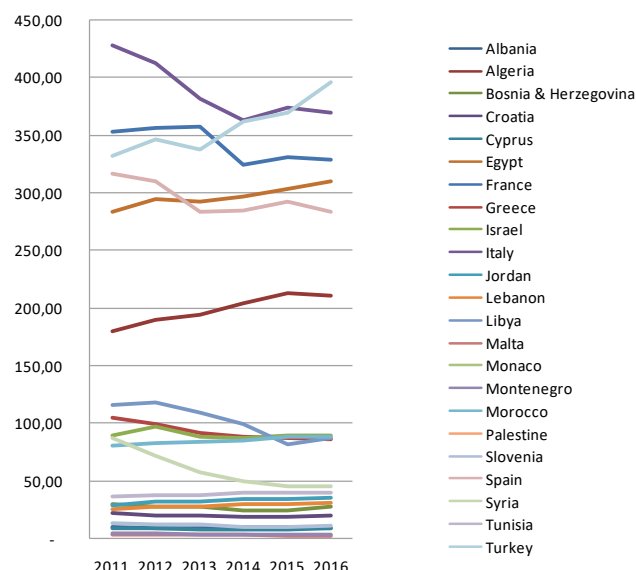
GHG emissions are the main consequence of our industrialized times. Therefore, in most industrialized countries or where there is a bias towards industrial and energy activities with increased GHG emissions, the amount of CO<sub>2</sub> equivalents is not decreasing, showing a clear need for transition.



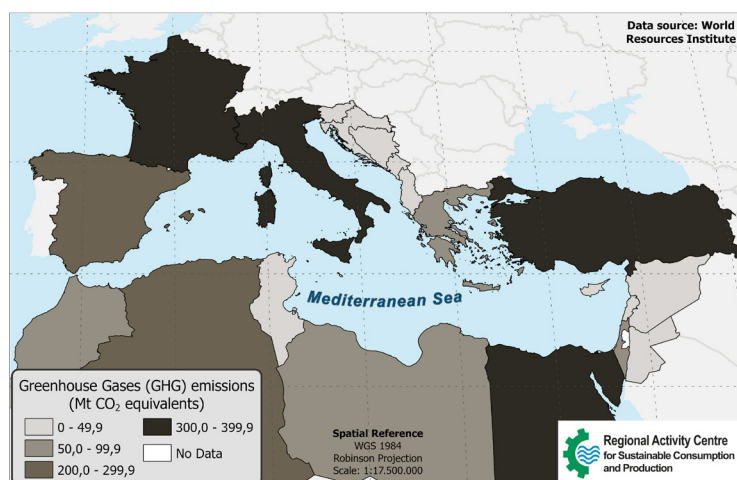
### Key message

There is no clear downward trend for greenhouse gas (GHG) emissions from consumption and production in the Mediterranean region as a whole, nor in any localized geographical area (country).

### Trends in GHG emissions (2011-2016)



### GHG Emissions - Carbon Footprint (2016)



The designations employed and the presentation of material on this map do not imply the expression of any opinion whatsoever on the part of the Secretariat of the United Nations concerning the legal status of any country, territory, city or area or of its authorities, or concerning the delimitation of its frontiers or boundaries

[Click here to go to the interactive MapX version](#)

**Sources**  
World Resources Institute

**Links**  
<https://www.climatewatchdata.org/>  
<http://cait.wri.org/>